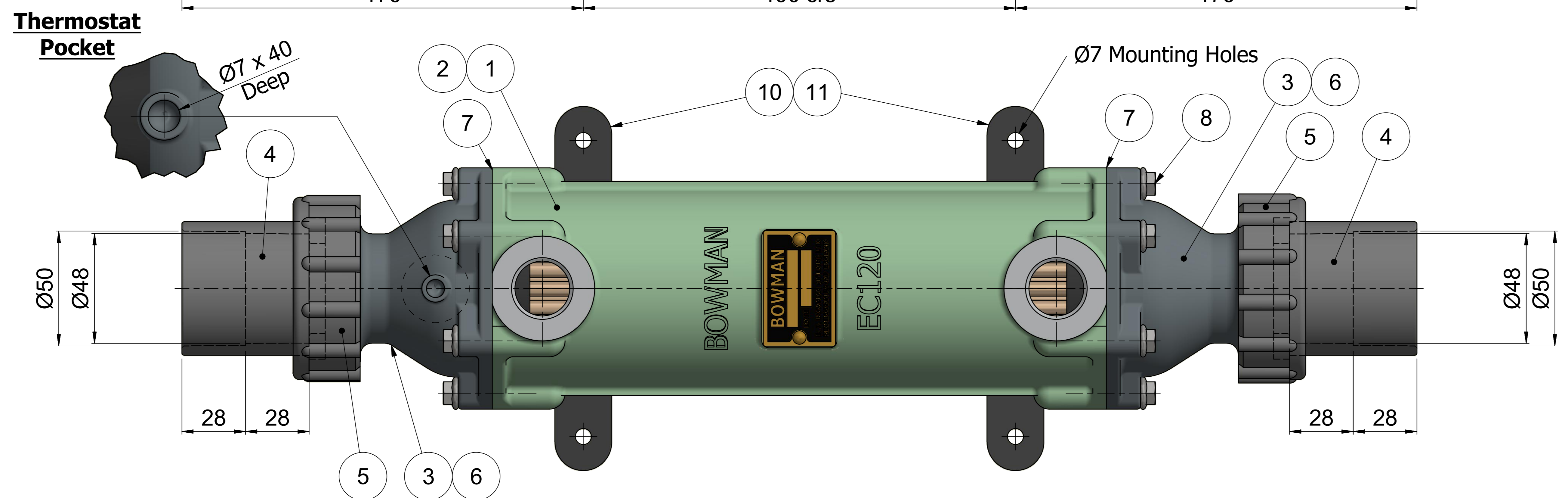
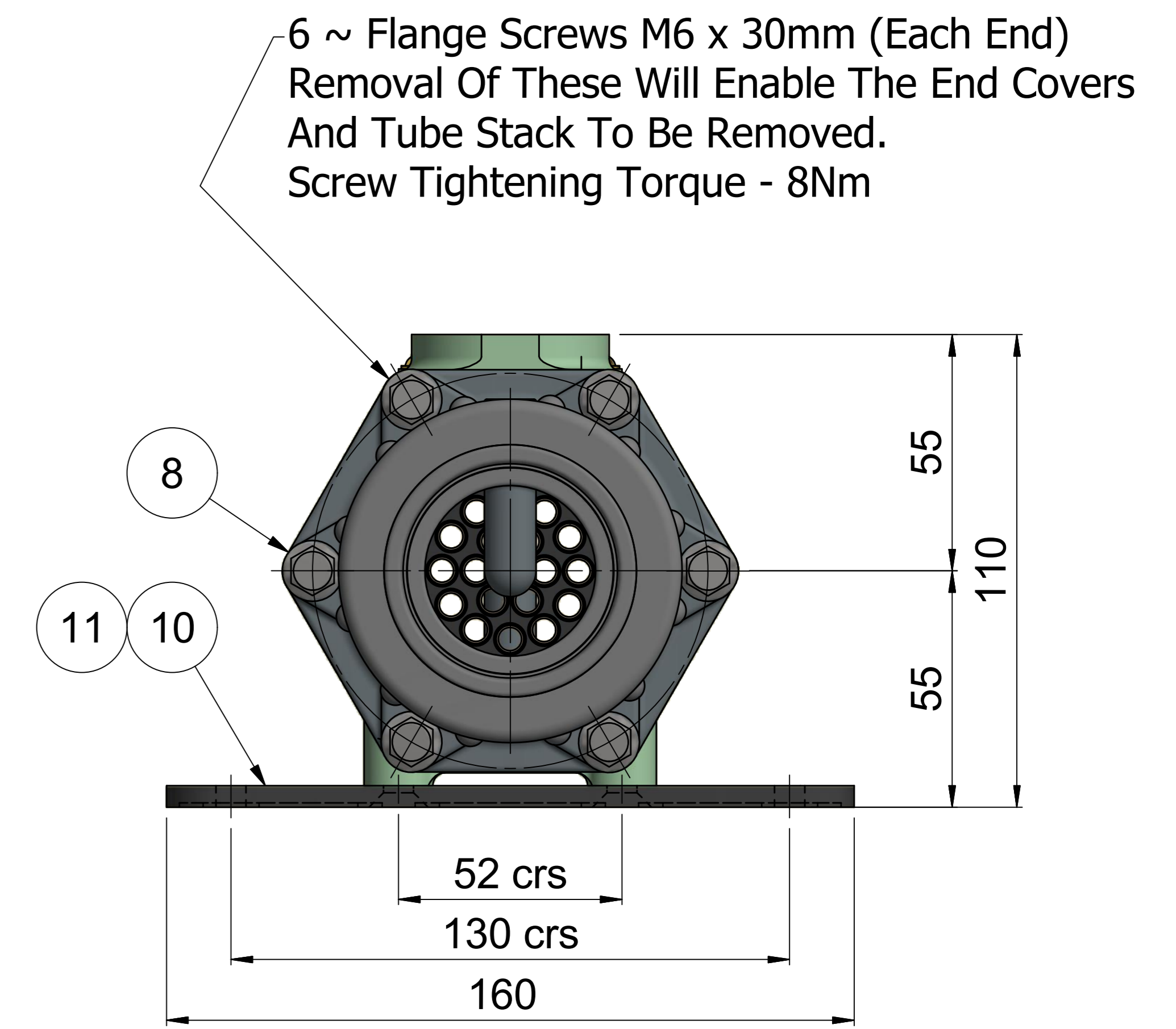
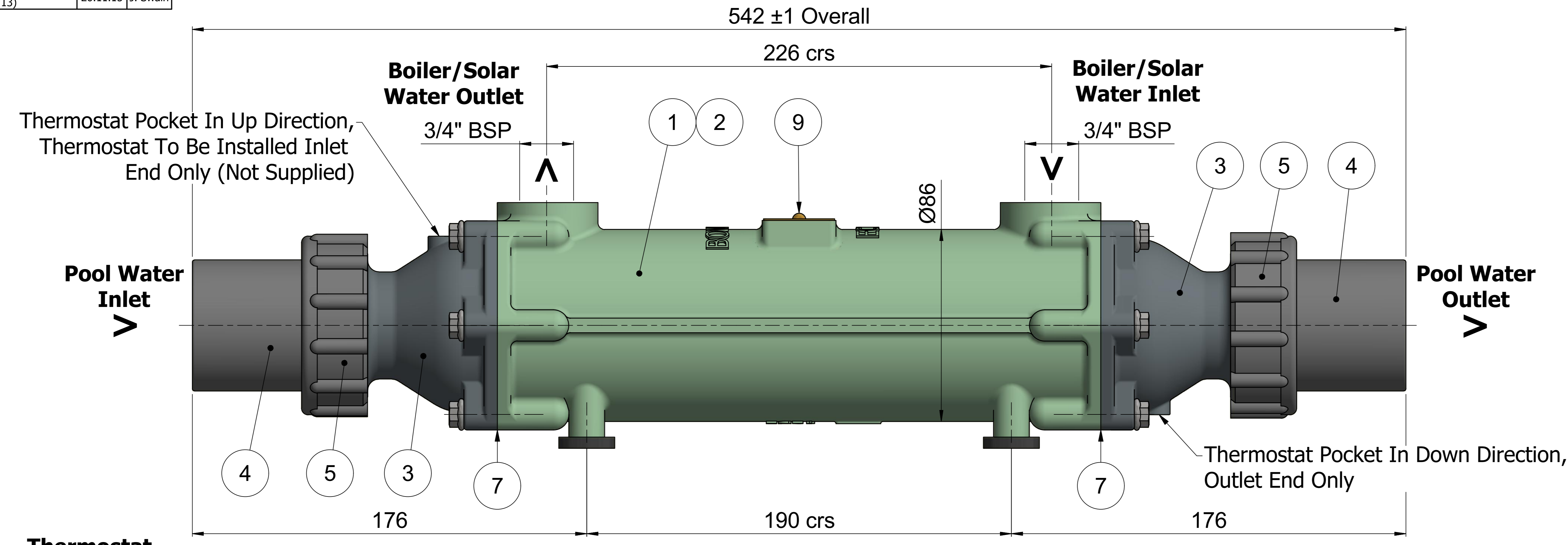


ISS No	MODIFICATION	DATE	SIGN	ISS No	MODIFICATION	DATE	SIGN
2	Body Patt No EC71 Was Body Patt No EC20. Bush Assembly Added	12/03/08	D.S.	11	End Cover Now Threaded Universal Fit (4567THD), Union Bush (BS/Metric) Replaced By Universal Fit Socket Union 4573, Union Ring Replaced By 4574, (Was 5132), Split Rings Removed, Overall Length Reduced To Match Physical Part (-2mm), Max Temp/Pressure Added.	12.04.17	J. Swain
3	Flange Screws Were Socket Screws	13/08/08	D.S.				
4	Tubestack Was 5088-3TN2P	26/11/09	D.S.				
5	RH End Cover Rotated 180° Tube Stack Table Added	23/02/11	M.M.D.				
6	Union Bush Assy Separated Into Individual Parts, Mounting Feet Changed To 5032-1	29.08.12	J. Swain	12	Dimensions Corrected As Per JB - Overall Corrected To 542 (543), Ends To Centre Corrected 176 (176.5), Body Feet 52mm Crs Added	10.07.17	J. Swain
7	Union Bush Material Corrected To UPVC	24.07.13	A.Taylor				
8	End Cover Torque Setting Added	26.11.14	A.Taylor				
9	Thermostat/Pocket Noted Added To Inlet/Outlet Ends	21.07.15	J. Swain				
10	Items Supplied Loose Note Corrected (Items 8, 12 & 13)	26.11.15	J. Swain				

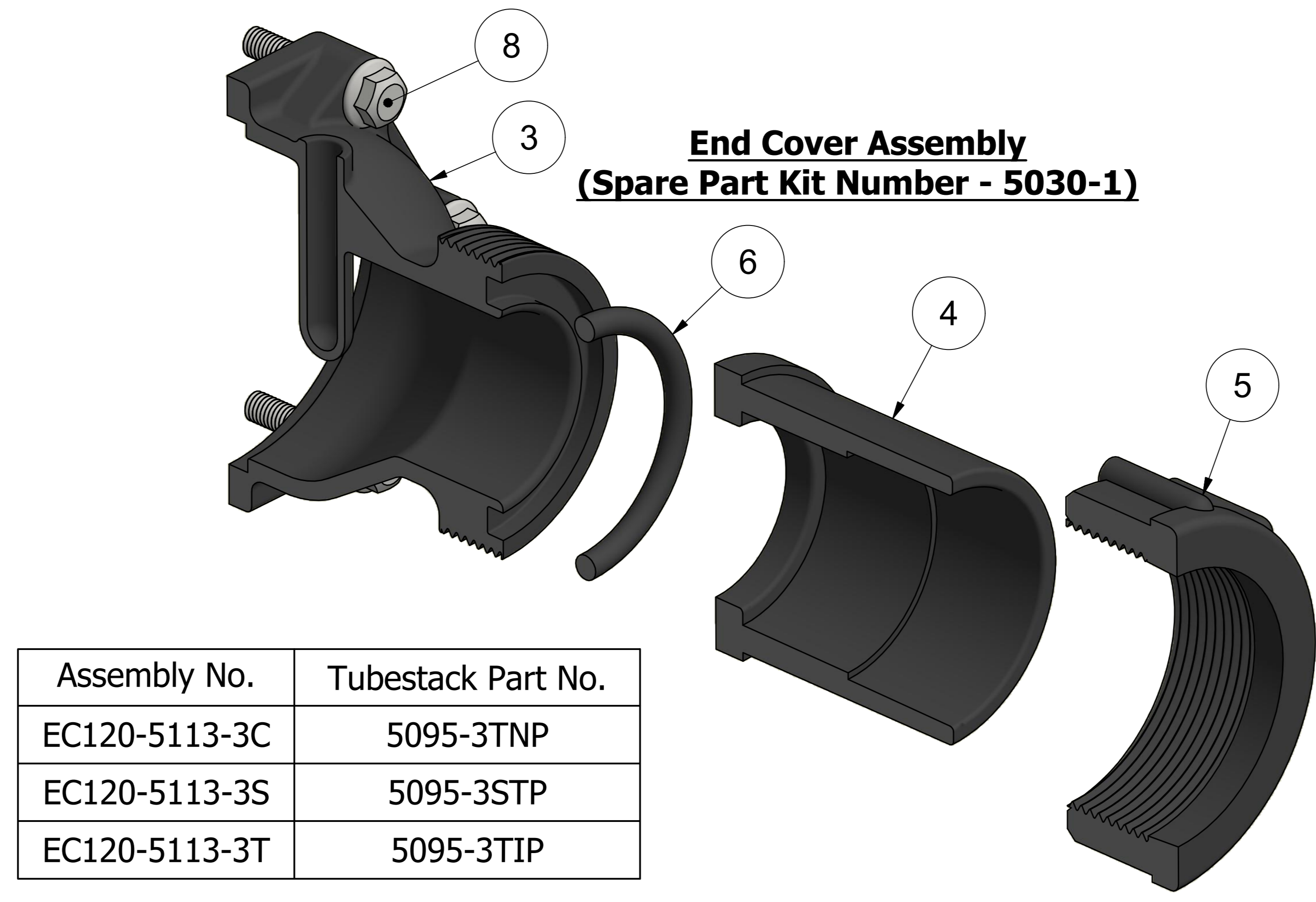
THIS DRAWING IS STRICTLY PRIVATE AND CONFIDENTIAL AND IS THE SOLE PROPERTY OF E.J. BOWMAN (BIRMINGHAM) LTD. IT IS SUBJECT TO BOTH COPYRIGHT AND DESIGN RIGHT PROTECTION. ANY REPRODUCTION IN PART OR WHOLE SHALL BE MADE ONLY WITH THE WRITTEN CONSENT OF A DIRECTOR OF THE ABOVE COMPANY.

DO NOT SCALE - IF IN DOUBT ASK!

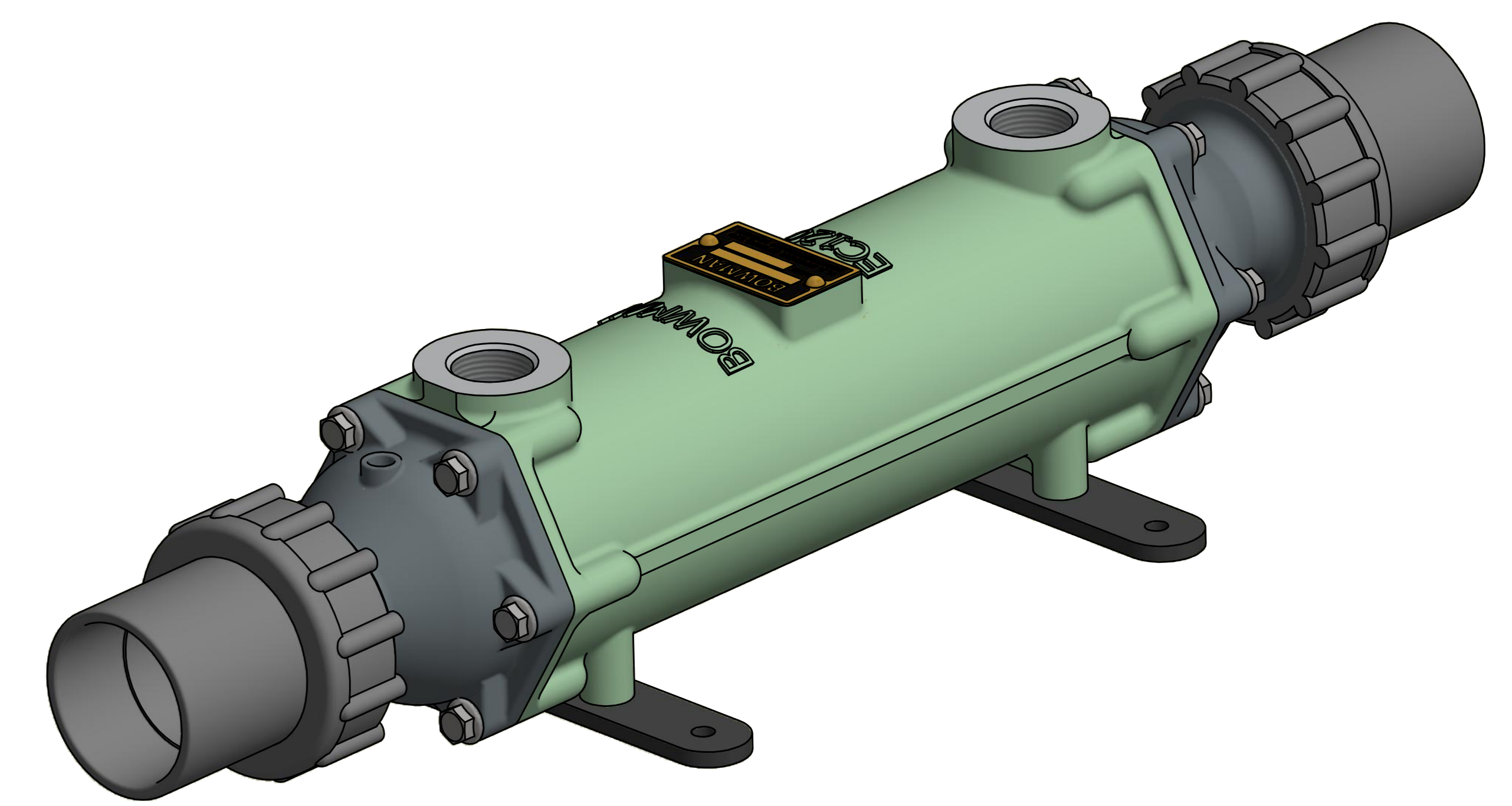


Notes:
 Mounting Feet (Items 10 & 11) Supplied Loose With Assembly. Body To Be Painted Swimming Pool Green.
 * Drawing No. Suffix To Indicate Tube Material,
 C=Cupro Nickel Tube
 S=Stainless Steel Tube
 T=Titanium Tube
 Maximum Working Temperature 110°C (230°F)
 Maximum Working Pressure 6 Bar (87psi)


Part No.	Drg No.	Qty	Description	Item	Material
		4	Countersunk Screws M6 x 12mm	11	Mild Steel
5032-1		2	Mounting Feet	10	GFN
3594	3594	1	Name Plate	9	Brass
FS06X30	-	12	Flange Screws M6 x 30mm	8	Mild Steel
AN12NT	3297	2	O Ring Seal (BS1806 Size 234)	7	Nitrile
5133	5133	2	O Ring Seal (BS1806 Size 328)	6	EPDM
4574	4574	2	Socket Union Ring 1½" To 50mm	5	ABS
4573	4573	2	Socket Union 1½" To 50mm	4	ABS
4567THD	4567THD	2	End Covers (Threaded)	3	GFN
See Table	5095	1	Tubestack EC120	2	*
EC071-4568-3CI	4568	1	Body EC120	1	Cast Iron



Assembly No.	Tubestack Part No.
EC120-5113-3C	5095-3TNP
EC120-5113-3S	5095-3STP
EC120-5113-3T	5095-3TIP



ALL DIMENSIONS ARE IN MILLIMETRES

E.J.BOWMAN (BIRMINGHAM) LTD.		
Chester Street Birmingham B6 4AP England Tel: +44(0) 121 359 5401 Fax: +44(0) 121 359 7495 email: info@ejbowman.co.uk www.ejbowman.co.uk		
DRAWN:	D.Sargeant	TITLE:
DATE:	06/12/2007	EC120 Swimming Pool Heat Exchanger
REDRAWN:		
DATE:		
CHECKED:		DRG No:
SCALE:	1:1	5113-3 *